

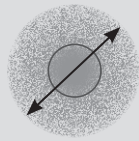
Front sweepers

with floating metal collection box for tractors, municipal vehicles and loaders

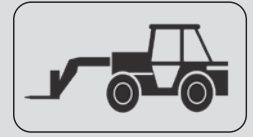
KM 70

Working widths

250/270/300 cm



Sweep roller diameter
70 cm



From 80 hp



Drive via duplex chain
(self-tensioning/maintenance-free)



Sweeping roller versions

Combination sweeper roller (1), Polywell wire sweeper roller (2), dirt sweeper roller (3), snow sweeper roller (4)

Other roller types for different applications possible



Slewing ring

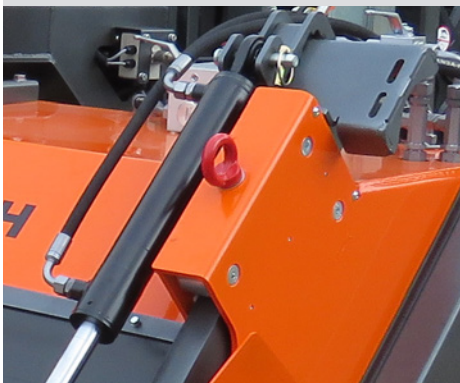
KM CONTROL
Automatic height adjustment
(option)

Central
Height adjustment

Central control block
for all functions

Positioning
supports

PVC splash guard



Divided
Side part

Large dimensioned
Collection box

Guide for
floating
collection box

Hydraulic
Container emptying

Sturdy swivel castors
made of Solid rubber, 2
tons support load



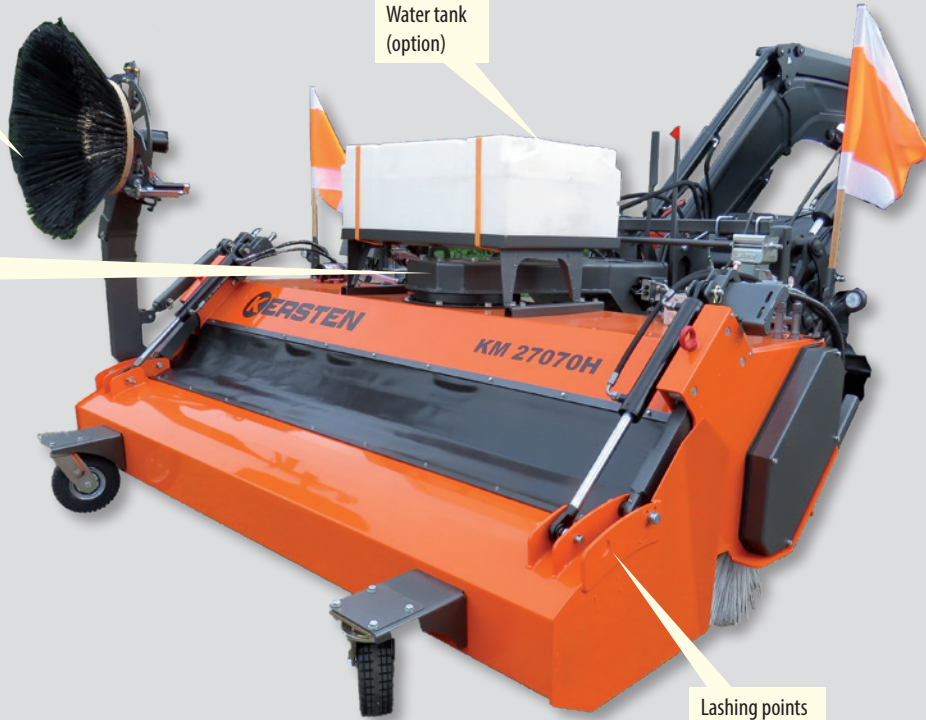
Divided
Side part

Attachment side broom with collision protection and tool-free angle adjustment (option)

Water tank (option)

Solid Slewing ring 10 tons tractive force

Lashing points



FACTS

Special features

- Prepared for KM CONTROL
Electronic height control
- Floating collection box
Made of steel



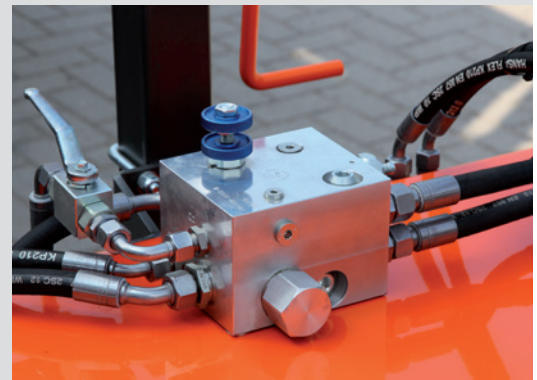
Use of sweeping roller types

- Combination sweeper roller
(standard factory setting)
For more than 90% of all applications
- Polycorrugated wire sweeping roller
For high levels of stuck dirt, e.g. moss, etc.
- Dirt sweeping roller
Due to higher bristle content suitable for greater soiling
- Snow sweeping roller
Due to a special bristle arrangement with a larger space between the bristles, the snow is optimally transported away

Practical accessories

- Dirt collection container
The dirt is collected in one operation
- Rubber splash flap
To reduce flying dirt particles
- Side broom right/left
For collecting dirt also in side areas, e.g. curb gutters etc.
- Positioning supports
for longer storage in order not to damage the sweeping roller
- Water sprinkler system
Low pressure/high pressure
- Scraper bar

Hydraulic block with all Safety functions



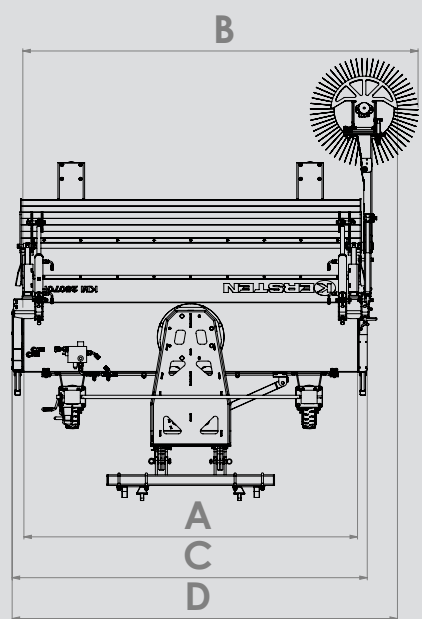
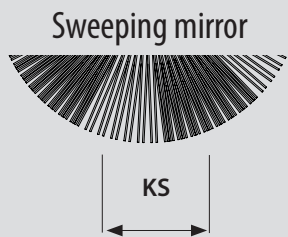
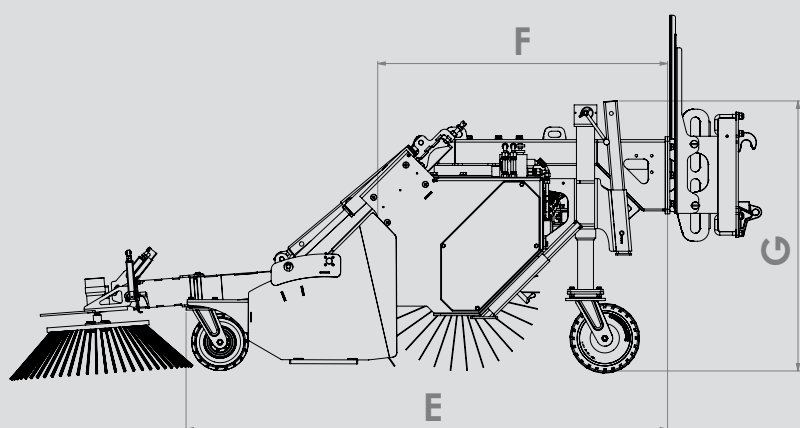
Positioning supports



Height adjustment



Measurements	KM 22570 H	KM 25070 H	KM 27070 H	KM 30070 H
A: Working width straight; without side broom [cm]	225	250	270	300
B: Working width straight; with side broom [cm]	265	290	310	340
Working width inclined [cm]	205	229	247	274
C: Clearance width straight; without side broom [cm]	242	267	287	317
D: Clearance width straight; with side broom [cm]	263	288	308	338
Clearance width, inclined; without collection box [cm]	250	270	290	310
E: Length; including collection box; With attachment frame [cm]	212	212	212	212
G: Height; without attachment frame [cm]	119	119	119	119
Brush diameter [cm]	70	70	70	70
Swivel angle [degrees]	25	25	25	25
KS: Sweep mirror [cm]	12-15	12-15	12-15	12-15
Weights				
Basic unit [kg]	530	550	580	630
Collection box [kg]	204	212	220	232
Side broom [kg]	62	62	62	62
Scraper bar [kg]	210	230	250	275
Water sprinkler; full tanks [kg]	235	235	235	235
Capacity				
Collection box [ltr]	275	300	325	360
Water sprinkler [ltr]	200	200	200	200
Power				
Oil volume [ltr/min] at 180 bar	50	50	50	50
Tractor power mech. [hp] min.	80	80	80	80



Item number	Description
Hydraulically driven	
<p>KM 22570 H (without attachment frame) Working width 250 cm</p> 	<p>Professional sweeper 250 cm working width Sweeping roller diameter 70 cm</p> <ul style="list-style-type: none"> Hydraulically driven Internal orbital motor Internal support frame, high stability and rigidity Sweeping roller diameter 70 cm 2 heavy duty supports with wheels 300 x 100 mm Height adjustment of the sweeping roller is done by a crank Mechanical left and right swiveling via ball slewing ring Ø 400 mm Combined sweeping roller with poly brushes Multifunctional hydraulic block for all necessary functions (overpressure valve, overrun protection of the sweeping roller, switch valve for dirt collection tank, flow control valve for infinitely variable speed of the sweeping roller. Load-sensing safety valve) Prepared for floating collection box Divided side part for changing the sweeping roller Painting RAL 2004 Prepared for KM CONTROL
<p>KM 25070 H (without attachment frame) Working width 250 cm</p>	<p>Professional sweeper 250 cm working width Sweeping roller diameter 70 cm</p> <p>For further description see art. no.: KM 22570 H</p>
<p>KM 27070 H (without attachment frame) Working width 270 cm</p>	<p>Professional sweeper 270 cm working width Sweeping roller diameter 70 cm</p> <p>For further description see art. no.: KM 22570 H</p>
<p>KM 30070 H (without attachment frame) Working width 300 cm</p>	<p>Professional sweeper 300 cm working width Sweeping roller diameter 70 cm</p> <p>For further description see art. no.: KM 22570 H</p>
Attachment frame	
<p>ABR 70 FRONT</p>	<p>Attachment frame for front three-point linkage</p>
<p>ABR 70 TELE-DP</p>	<p>Attachment frame for wheel loader/telescopic loader attachment and three-point attachment</p>
<p>ABR 70 Euro</p>	<p>Attachment frame for Euro mount</p>
<p>ABR 70 GS</p>	<p>Attachment frame for forklift truck mount</p>
<p>ABR 70 U</p>	<p>Attachment frame for Unimog mount/implement plate according to DIN-EN</p>

Description	Suitable for sweeper	KM 22570 H	
Options/Accessories			
Dirt collection container <ul style="list-style-type: none"> Protective cover included Including hydraulic tank emptying with 2 cylinders Floating 		Item number	SSB 22570
Scraper bar with hydraulic operation (also in combination with collection box)		Item number	-
Splash guard Rubber splash cloth included <ul style="list-style-type: none"> Height adjustable 		Item number	SPL 22570
Attachment side broom 70 cm broom diameter right side <ul style="list-style-type: none"> Hydraulically driven, infinitely variable Start-up protection mounting plate 		Item number	ASH 8570 R
Attachment side broom 70 cm broom diameter left <ul style="list-style-type: none"> Hydraulically driven, infinitely variable Start-up protection mounting plate 		Item number	ASH 8570 L
Water sprinkler <ul style="list-style-type: none"> Water tank 200 liters, for mounting on the sweeper Nozzle bar for sweeper installation Electric submersible pump 12 Volt 		Item number	WAS 200 KM 70
Hydraulic swiveling device <ul style="list-style-type: none"> For swiveling the machine on both sides 		Item number	HSZ-450
Electromagnetic valve <ul style="list-style-type: none"> For installation in sweeper thereby only 1 double acting valve required, Function: swiveling and sweeper drive Height adjustment via spindle 		Item number	EMV-KM 70
KM CONTROL automatic height adjustment/monitoring of the sweeping roller on the ground <ul style="list-style-type: none"> Can be controlled from the vehicle via control panel Permanent monitoring of the height adjustment 		Item number	KM-CONTROL
Marker lights red-white		Item number	BGL-KM 70
Set of warning flags with holder		Item number	WA-FLAG-KM 70

KM 25070 H	KM 27070 H	KM 30070 H
SSB 25070	SSB 27070	SSB 30070
AKL 25070	AKL 27070	AKL 30070
SPL 25070	SPL 27070	SPL 30070
ASH 8570 R	ASH 8570 R	ASH 8570 R
ASH 8570 L	ASH 8570 L	ASH 8570 L
WAS 200 KM 70	WAS 200 KM 70	WAS 200 KM 70
HSZ-450	HSZ-450	HSZ-450
EMV-KM 70	EMV-KM 70	EMV-KM 70
KM-CONTROL	KM-CONTROL	KM-CONTROL
BGL-KM 70	BGL-KM 70	BGL-KM 70
WA-FLAG-KM 70	WA-FLAG-KM 70	WA-FLAG-KM 70